

SHAWFORD

SOLAR SECURITY FLOOD LIGHT

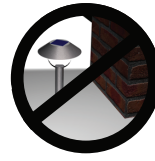
USER GUIDE



Ensure your solar panel is South facing or as near as possible



Clean your solar panel from time to time



Do NOT place your solar panel in shaded areas.



Do NOT charge behind glass

Thank you for choosing the Shawford Solar Security Flood Light. Please read these instructions carefully before using your light.

Important notes

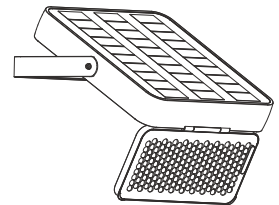
Always take care when installing your light. If you are at all unsure, please contact your retailer or a professional trades person for advice.

Installation

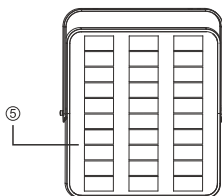
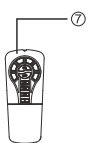
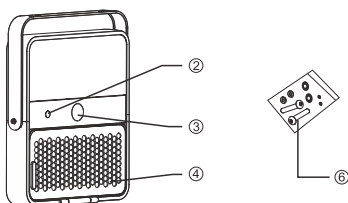
Remove all packaging and put to one side. Please carefully consider where you wish to install your light before making alterations to your property. It's particularly important that the solar panel receives as much sunlight as possible. Ensure that it is not obstructed by buildings, fences, trees, sheds, etc, or the shadows that these create. **If the solar panel is installed in a poor location, it may not perform to the best of its ability.**

To maximise the battery capacity, the lights should be charged in direct sunlight for at least 12 hours, where possible, before being used for the first time. Failure to do so can shorten the battery life or performance of the light.

The lights will turn ON/OFF automatically when left in the on position. Please note it is completely normal for the lights to come on at different times as it depends on how fast they charge in their location.

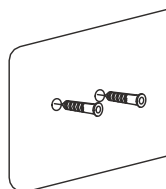


Box contents:

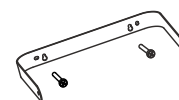


- ① Bracket
- ② On/Off
- ③ PIR
- ④ LED panel
- ⑤ Solar panel
- ⑥ Accessories pack
- ⑦ Remote control

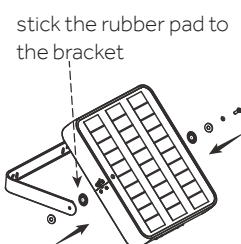
How to install:



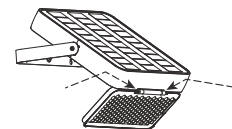
1. Install the expansion screw columns into the wall



2. Install the bracket



3. Adjust the angle of the lamp and bracket, then fix the bracket with screws



4. Adjust the angle of the light board and fix the screws on both sides

How to use:

Switch

Press for 1.5 seconds to turn the light ON/OFF

Short press to switch between different lighting modes or use the remote control provided.

Lighting mode indicator

The red LED light is located in the dome-shaped PIR on the underside of the solar panel. It has a range of modes:

M1: Red LED flashes once

M2: Red LED flashes twice

M3: Red LED flashes three times

T: Red LED Flashes four times (enabled via remote control)

Lighting Mode

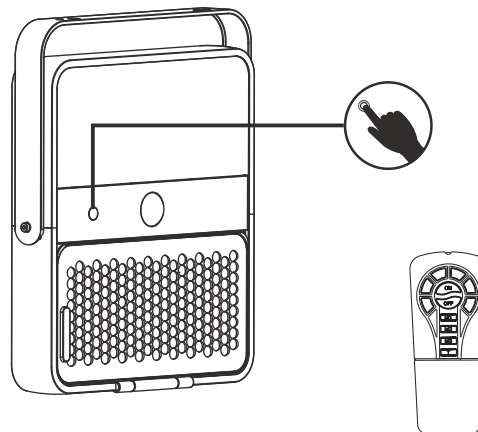
M1: 100% brightness for 5 hours

+20% brightness till dawn

M2: 60% brightness till dawn

M3: 20% brightness + PIR till dawn

T: 100% brightness for 2 hours + back to previous mode. [This mode is only activated by pressing the 'T' button on the remote control].



Dial

Locate the dial on the back of the light to adjust the angle of the light

Troubleshooting

Please ensure that there are no nearby light sources shining on the solar panel after dark. These could be bright indoor/outdoor lights from your property or neighbours, or street lights.

If you are unsure, take the light inside and test it in a dark room.

If you are encountering any problems with your light often you can resolve this yourself by following our troubleshooting guide. If the light has its solar panel in a poor location it will struggle to work, but that doesn't mean there is a fault with the unit. Please remember that the light will arrive with some charge and will likely work for a few days even if the solar panel is poorly located. Please try the troubleshooting tips below before contacting your retailer.

Recharge Procedure

1. Double check the location of your solar panel to ensure it is in a clear location and as South facing as possible.
2. Turn the light off at the switch and leave it to recharge for 3-5 days ensuring one sunny day has passed.
3. After 3-5 days return to the light and turn it back on at the switch.
4. If your light still does not illuminate after dark, please contact your retailer.

Maintenance

Clean the surface of the solar panel and light lens with a soft, slightly moistened cloth. Do not use corrosive cleansing agents or chemical solutions as these may damage surfaces and impair operation. Keep the solar panel free of dirt, debris and snow.

Safety Instructions

The Solar Centre assumes no liability for any damage resulting from the use of this product, nor do we assume liability for any damage to property or personal injury caused by improper use or failure to observe these instructions.

Unauthorised conversion and/or modification of the unit may be dangerous and will invalidate your warranty. To avoid damage to sight, do not look directly at the light source. This device is not a toy and should be kept out of reach of children. Do not submerge the device in water or expose it to extreme temperatures (less than -25°C or higher than 50°C).

SHAWFORD SOLAR SECURITY FLOOD LIGHT

MODEL NUMBER: SC2218

SOLARCENRE®
44-46 COLDHARBOUR LANE
HARPENDEN
HERTFORDSHIRE
AL5 4UN

WWW.SOLARCENRE.CO.UK

